

360 Degree camera



Slavia 2022 →

This Kit is applicable only for Monte Carlo, Prestige, Sportline, Signature variant's of Slavia

Note :

We recommend that the fitting is carried out by an authorized workshop of SAVW.

Fitment/Removal of car parts to be done as per Elsa pro system guideline only.

Disclaimer :

The routing of the wiring harness for the 360-degree camera system is standardized and common across Skoda & VW vehicle models. Accordingly, the images and illustrations provided in this fitment manual are for representative purpose only. Please note that the variations will be occurred in the fitment locations of the ECU, as well as the front and rear cameras. Installers are advised to refer to vehicle-specific guidelines & take necessary fitment steps accordingly.

General Instruction :

1. For the calibration of the 360-degree camera system, the use of the designated calibration mat (Part No.: **LOC-063-511-CL-MAT**) is mandatory.
2. Please note that this calibration mat is **not included** in the camera kit and must be **ordered separately** by the dealership based on requirement.
3. **A single calibration mat can be reused for multiple vehicle fitments.** Therefore, it is **not necessary to order a separate mat for each fitment.**
4. Dealerships are advised to maintain one or more mats as shared tools to support efficient calibration across multiple installations.

Distributed By :- **SKODAAUTO VOLKSWAGEN INDIA PVT LTD**

Printed in India

Version 01






SR NO	Included in the kit	QTY
1	ECU/Junction Box	1
2	Left camera extension cable	1
3	Right camera extension cable	1
4	Rear camera extension cable	1
5	Front camera extension cable	1
6	32Pin Control Cord	1
7	Camera	4
8	Tie Cable.	6
9	SAVW Dedicated Power Cable	1
10	Extra rubber caps	2
11	Remote	1
12	Screws	1 pack
13	Hole saw (2 in 1) 22.5mm+8mm	2 pcs
14	2 Way Tape	3 pcs
15	Sensors	1 set
16	ORVM template	1 set
17	Hole Saw 2mm	1 pcs
18	Silicone Sealant	1
19	Remote Sensor Tape	1
20	CR2032 Lithium Battery 3V	1
21	Cleaning Alcohol Swab	1


Distributed By :- **SKODAAUTO VOLKSWAGEN INDIA PVT LTD**

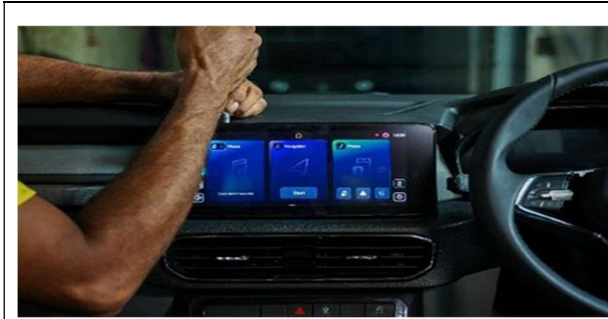
Printed in India

Version 01 

Distributed By :- **SKODAAUTO VOLKSWAGEN INDIA PVT LTD**

Printed in India

Version 01 



STEP 1 :- REMOVE THE TOP BEZEL PANEL AND SCREWS



STEP 2 :- INSERT PIN AS SHOWN IN PIC



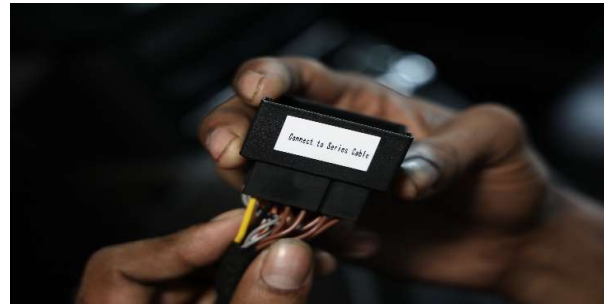
STEP 3:- PULL AND DISCONNECT MULTIMEDIA/INFOTAINMENT LOCK



STEP 4 :- REMOVE THE SERIES MULTIMEDIA/INFOTAINMENT AS PER SERIES DISASSEMBLY PROCESS



STEP 5 :- DISCONNECT ALL SERIES CABLE FROM MULTIMEDIA/INFOTAINMENT



STEP 6 :- CONNECT SAVV DEDICATED POWER CABLE (PART-9) TO THE SERIES CABLE AS PER STICKERS ON THE PART



STEP 7 :- CONNECT THE OTHER END OF (PART 9) TO THE SERIES MULTIMEDIA/INFOTAINMENT AS SHOWN ON THE STICKER.



STEP 8 :- TAKE THE 32 PIN CONTROL CORD (PART NO 6)

Distributed By :- **SKODA AUTO VOLKSWAGEN INDIA PVT LTD**

Printed in India

Version 01





STEP 9 :- TAKE THE 3RD END OF THE SAVV DEDICATED POWER CABLE (PART 9)



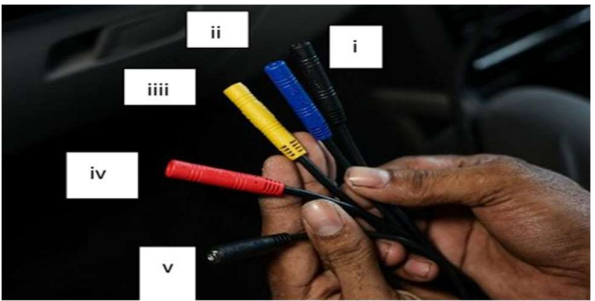
STEP 10 :- CONNECT THE 2 SOCKETS AS MENTIONED ON THE PARTS STICKER



STEP 11 :- TAKE THE 32 PIN CONTROL POWER CORD.



STEP 12 :- CONNECT IT TO JUNCTION / ECU BOX AS SHOWN.



STEP 13 :- THESE ARE THE CAMERA CONNECTORS (i) FRONT CAMERA (ii) RIGHT CAMERA (iii) REAR CAMERA (iv) LEFT CAMERA (v) SENSOR CONNECTOR



STEP 14 :- CONNECT THE 4 CAMERAS (AS MARKED BY THE STICKERS) TO THE CAMERA CORD AS MARKED IN STEP 13




STEP 15 :- FUNCTION CHECK ALL THE CAMERAS BY POWERING ON INFOTAINMENT.



STEP 16 :- DISCONNECT ALL THE CAMERA CABLES

Distributed By :- **SKODA AUTO VOLKSWAGEN INDIA PVT LTD**

Printed in India

Version 01 



STEP 17 :- OPEN GLOVE BOX AS PER SERIES PROCESS



STEP 19 :- UNSCREW PLASTIC PART AS SHOWN



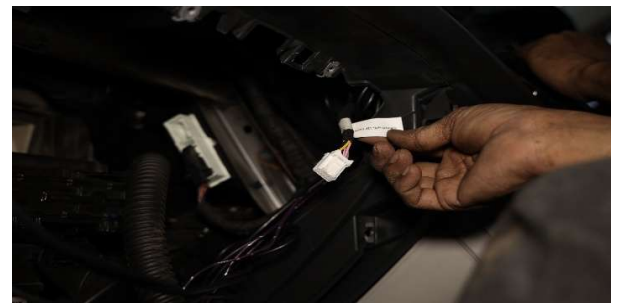
STEP 20 :- OPEN DASH BOARD SIDE TRIM.



STEP 21 UNPLUG THE CONNECTOR



STEP 22 : - ROUTE SAVV DEDICATED POWER CABLE (PART 9) FROM THE BACK OF THE MULTIMEDIA/INFOTAINMENT TO THE GLOVE BOX AREA AS SHOWN



STEP 23 ROUTE SAVV DEDICATED POWER CABLE (PART 9) FROM BACK OF THE MULTIMEDIA/INFOTAINMENT TO THE GLOVE BOX AREA AS SHOWN

Distributed By :- **SKODA AUTO VOLKSWAGEN INDIA PVT LTD**

Printed in India



STEP 24 :- ROUTE SAVW DEDICATED POWER CABLE (PART 9) FROM THE BACK OF THE MULTIMEDIA/INFOTAINMENT TO GLOVE BOX AREA AS SHOWN



STEP 25 :- CONNECT THE 32 PIN CONTROL CORD (PART 6) WITH SAVW DEDICATED POWER CABLE (PART 9) AS STEP 10



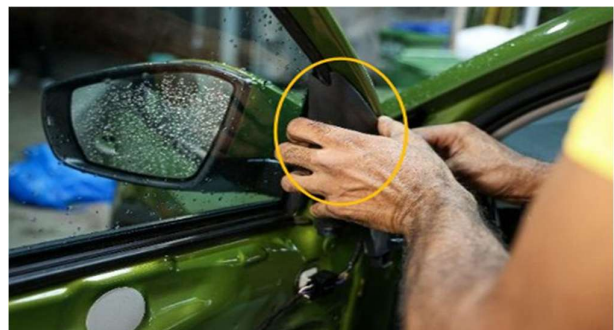
STEP 26 :-CONNECT THE OTHER END OF 32 PIN CONTROL CORD (PART 6) TO JUNCTION /ECU BOX (PART 1) AS STEP 10



STEP 27 :- REMOVE THE DOOR TRIM AS PER SERIES PROCESS




STEP 28 :- DISCONNECT ALL CONNECTORS ON THE DOOR PANEL



STEP 29 :- REMOVE THE LEFT AND RIGHT ORVM TRIM COVERS AS PER SERIES PROCESS

Distributed By :- **SKODA AUTO VOLKSWAGEN INDIA PVT LTD**

Printed in India

Version 01 



STEP 30 :- DISCONNECT THE ORVM CONNECTORS



STEP 31:- REMOVE THE LEFT AND RIGHT ORVM's CAREFULLY AS PER SERIES PROCESS.



STEP 32 :- REMOVE ORVM CAP FROM THE LEFT AND RIGHT ORVM's.



STEP 33 :- ALIGN THE ORVM TEMPLATES (PART 16) AS SHOWN




STEP 34 :- DRILL THE HOLE USING HOLE SAW 22.5 MM (PART 13) AS PER MARKINGS GIVEN ON THE TEMPLATE.



STEP 35 :- INSERT LEFT AND RIGHT CAMERA IN ORVMs RESPECTIVELY WITH RUBBER COVER/CAP ON THE CAMERA.

Distributed By :- **SKODA AUTO VOLKSWAGEN INDIA PVT LTD**

Printed in India

Version 01 



STEP 36 :- ROUTE THE CABLES THROUGH SPACE MARKED (FOR CLEAR DEMONSTRATION KINDLY REFER TO THE INSTALLATION VIDEO)



STEP 37 :- REMOVE THE FOAM PART



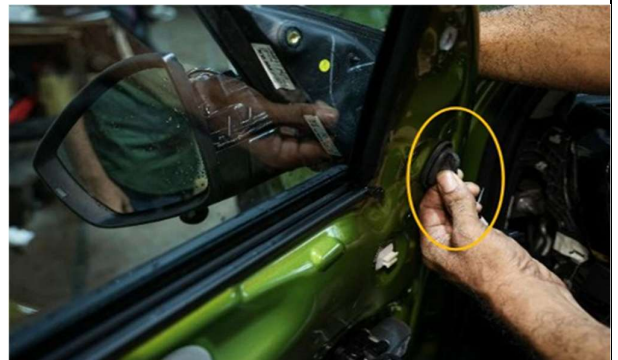
STEP 38 :- REMOVE THE COVER



STEP 39 :- ROUTE CABLES AS SHOWN FROM RUBBER GROMMET



STEP 40 :- CONNECT THE LEFT AND RIGHT ORVM's AND ROUTE CABLES AS SHOWN.



STEP 41 :- CONNECT THE RUBBER CAPS PROPERLY

Distributed By :- **SKODA AUTO VOLKSWAGEN INDIA PVT LTD**

Printed in India

Version 01

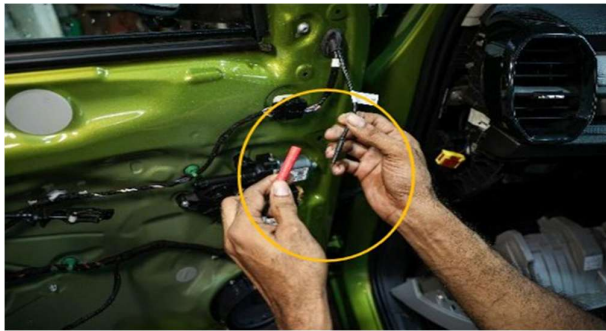




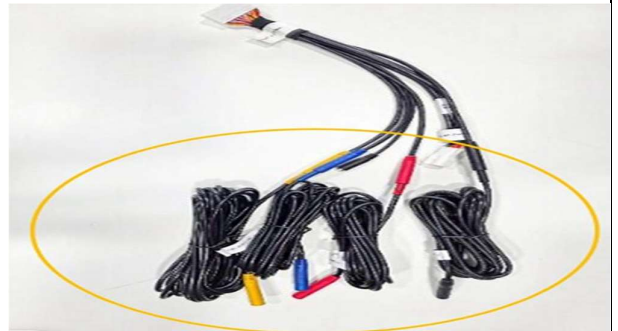
STEP 42 :- CONNECT ORVM's CONNECTOR



STEP 43 :- LOCK CONNECTORS AS PER SERIES FITTING



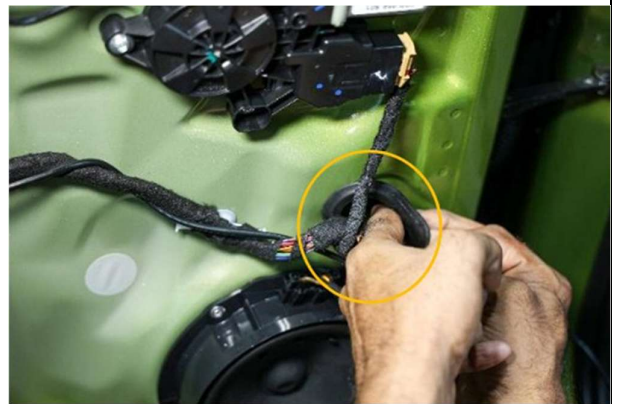
STEP 44 :- CONNECT LEFT CAMERA TO LEFT EXTENSION CABLE AS SHOWN DOOR PANEL



STEP 45 :- OVERVIEW OF ALL 4 CAMERA EXTENSION CABLE. (PART 2,3,4,5) CONNECT ONE END OF THE EXTENSION CABLE TO THE RESPECTIVE CAMERA AND THE OTHER END TO 32 PIN CONTROL CORD(PART 6) AS SHOWN.



STEP 46 :- ROUTE THE EXTENSION CABLE WITH THE SERIES CABLE.



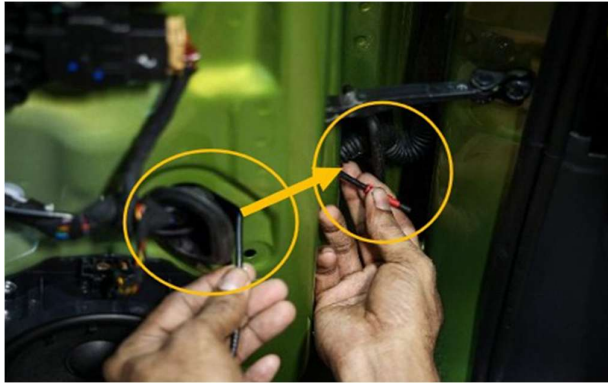
STEP 47 :- ROUTE EXTENSION CABLE THROUGH THE RUBBER GROMMET AS SHOWN IN STEP 47.

Distributed By :- **SKODAAUTO VOLKSWAGEN INDIA PVT LTD**

Printed in India

Version 01





STEP 48 :- ROUTE CABLE FROM THE RUBBER SLEEVES TO THE AREA SHOWN IN THE IMAGE (ROUTE DELICATELY)



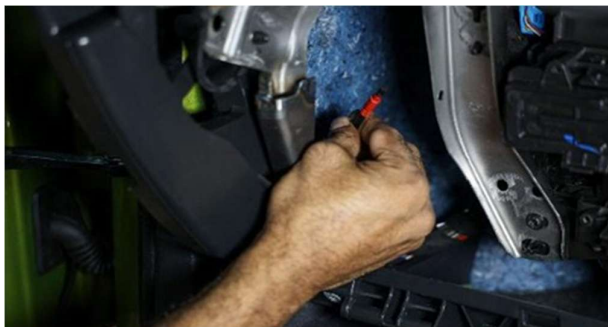
STEP 49 :- ROUTE CABLE THROUGH THE RUBBER PART AS SHOWN



STEP 50 :- AFTER ROUTING CABLE THROUGH THE RUBBER GROMMET, PASS IT THROUGH THE BODY HOLE GIVEN FOR THE SERIES HARNESS



STEP 51 :- AFTER ROUTING THROUGH THE HOLE, PULL ALL THE EXCESS CABLE GENTLY



STEP 52 :- KEEP THE EXTENTION CABLE CONNECTOR NEAR THE GLOVE BOX AREA.



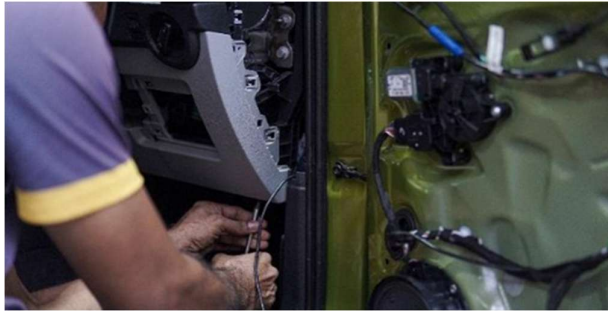
STEP 53 :- REPEAT THE SAME PROCESS ON THE RIGHT DOOR, ROUTE EXTENTION CABLE AS MARKED.

Distributed By :- **SKODAAUTO VOLKSWAGEN INDIA PVT LTD**

Printed in India

Version 01





STEP 54 :- REMOVE THE FUSE BOX COVER AS PER SERIES PROCESS



STEP 55 :- ROUTE CABLE AS SHOWN.



STEP 56 :- ROUTE CABLE AS SHOWN UNDERNEATH STEERING COLLUMN.



STEP 57 :- PASS THE CABLE TILL THE JUNCTION BOX AREA, JUST LIKE STEP 56



STEP 58 :- FITMENT OF FUSE BOX COVER BACK, AS PER SERIES PROCESS



STEP 59 :- ASSEMBLE DOOR TRIM OF THE LEFT AND RIGHT DOOR + OVRM AS PER SERIES PROCESS AFTER ENSURING ALL ELECTRICAL CONNECTIONS.

Distributed By :- **SKODA AUTO VOLKSWAGEN INDIA PVT LTD**

Printed in India

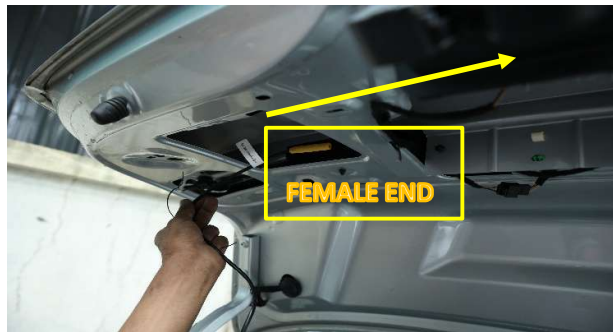




STEP 61 :- REMOVE THE TAILGATE PLASTIC TRIM AS PER SERIES PROCESS



STEP 62 :- TAKE REAR EXTENSION CABLE (PART 4) FOR ROUTING)



STEP 63:- ROUTE FEMALE END REAR EXTENSION CABLE (YELLOW) IN THE BOOT CAVITY AND PASS THE REST OF THE CABLE TILL GLOVEBOX AREA



STEP 64 :- ROUTE EXTENSION CABLE YELLOW (PART 4) FROM THE BOOT AREA TO GLOVE AREA.



STEP 65 :- ROUTE EXTENSION CABLE YELLOW (PART 4) MALE END AS SHOWN FROM HOLES IN TAIL GATE.



STEP 66 :- ROUTE CABLE AS SHOWN FROM HOLES IN TAIL GATE.

Distributed By :- **SKODAAUTO VOLKSWAGEN INDIA PVT LTD**

Printed in India

Version 01





STEP 67 :- ROUTE EXTENTION CABLE YELLOW (PART 4) MALE END THROUGH THE RUBBER SLEEVE



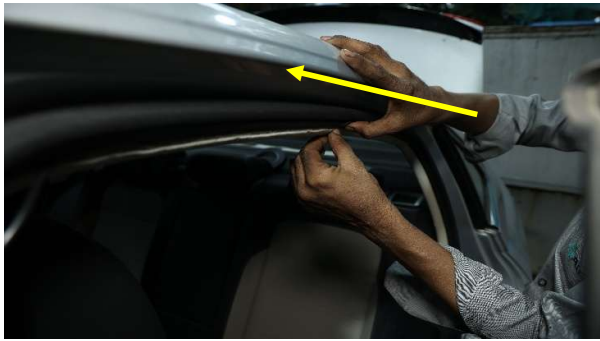
STEP 68 :- ROUTE EXTENTION CABLE YELLOW (PART 4) MALE END AS SHOWN FROM C-PILLAR



STEP 69 :- ROUTE EXTENTION CABLE YELLOW (PART 4) MALE END AS SHOWN FROM C-PILLAR



STEP 70 :- ROUTING CABLE THROUGH THE ROOF LINER FROM REAR DOOR TO FRONT DOOR.




STEP 71 :- ROUTE EXTENTION CABLE YELLOW (PART 4) MALE END WILL PASS THROUGH THE ROOF LINER.

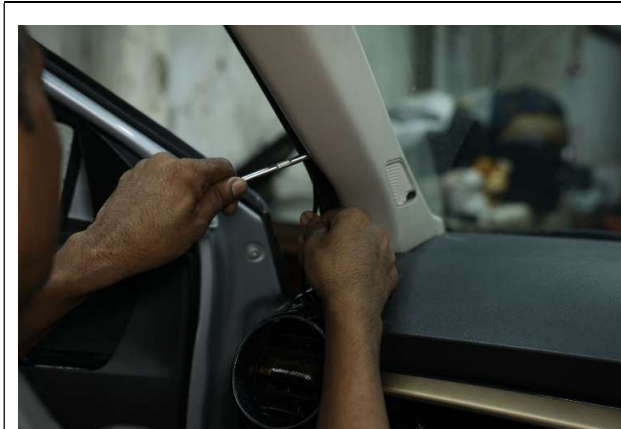


STEP 72 :- ROUTING CABLE THROUGH THE ROOF LINER FROM B-PILLAR TO A-PILLAR.

Distributed By :- **SKODAAUTO VOLKSWAGEN INDIA PVT LTD**

Printed in India

Version 01 



STEP 73 :- DISMANTLE A-PILLAR TRIM AS PER SERIES PROCESS.



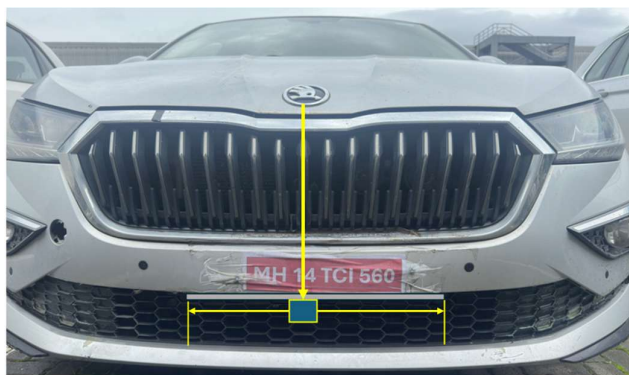
STEP 74 :- ROUTE CABLE UNDERNEATH A-PILLAR.



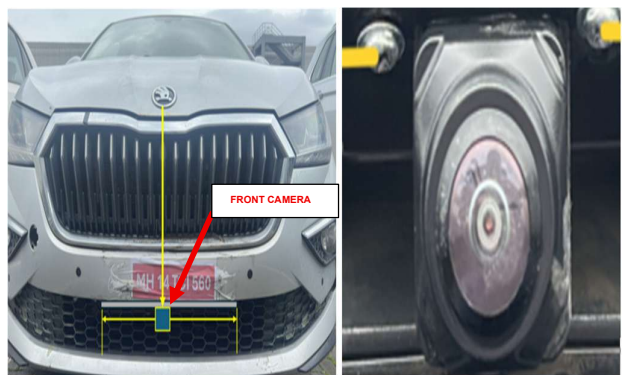
STEP 75 :- ROUTE CABLE UNDERNEATH THE A-PILLAR.



STEP 76 :- BRING CABLE NEAR THE GLOVEBOX AREA FOR NEXT CONNECTIONS.



STEP 77 :- CAMERA TO BE PLACED AS SHOWN ABOVE REPRESENTATION – MATCH CENTER LINE WITH CAR LOGO & CENTRAL RIB (RIB NO. 10) OF FRONT GRILL AND TO BE FITTED AS SHOWN IN ABOVE IMAGE.



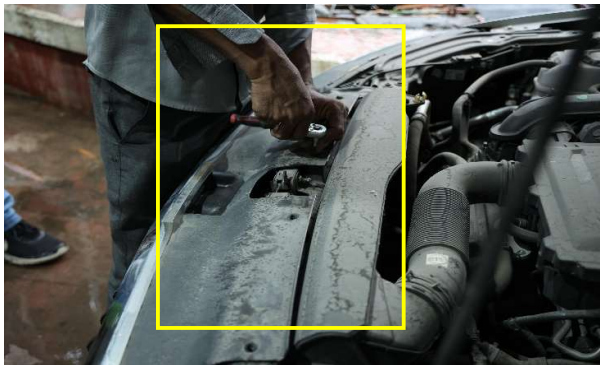
STEP 78 :- PLACE THE FRONT CAMERA AS PER STEP 76, FIT THE CAMERA WITH SELF TAPPING SCREW (PART NO. 12)

Distributed By :- **SKODA AUTO VOLKSWAGEN INDIA PVT LTD**

Printed in India

Version 01





STEP 79 :- REMOVE THE BUMPER INSERT COVER NEAR THE ENGINE BAY, AS PER SERIES PROCESS.



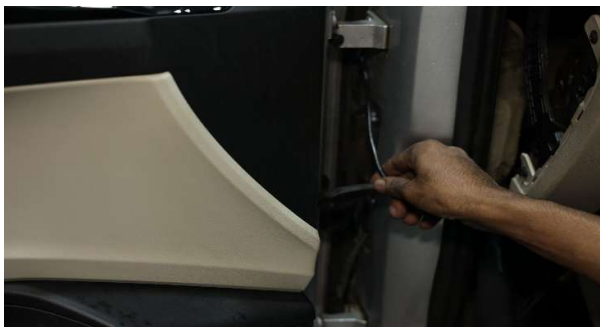
STEP 80 :- TAKE FRONT EXTENSION CABLE (PART NO 5)



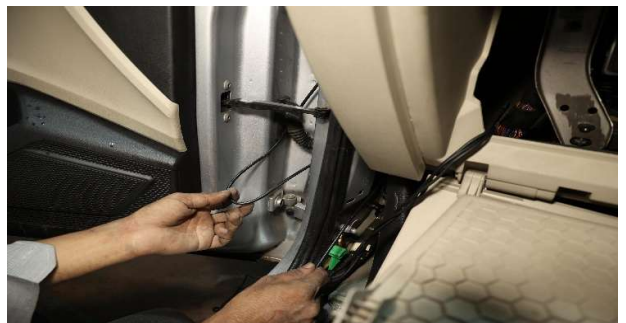
STEP 81 :- CONNECT THE FRONT CAMERA (PART 7) AND FRONT EXTENSION CABLE (PART 5)



STEP 82 :- ROUTE FRONT EXTENSION CABLE (PART 5) THROUGH EDGES OF THE ENGINE BAY



STEP 83 :- ROUTE CABLES AS MARKED (KINDLY REFER TO THE VIDEO IF ANY CONFUSION)



STEP 84 :- ROUTE CABLE THROUGH RUBBER SLEEVE AND THE GLOVEBOX AREA (KINDLY REFER TO THE VIDEO IF ANY CONFUSION).

Distributed By :- **SKODAAUTO VOLKSWAGEN INDIA PVT LTD**

Printed in India

Version 01





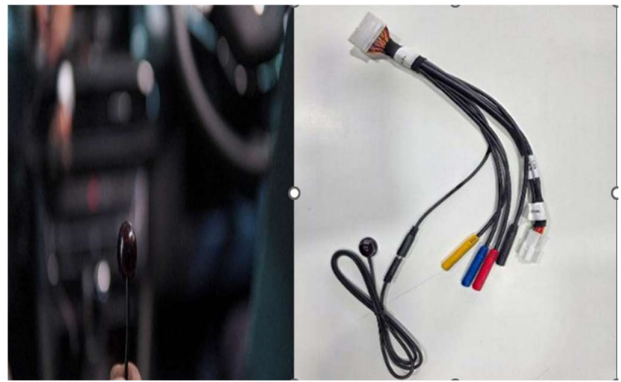
STEP 85 :- PASS THE CABLE THROUGH RUBBER SEAL AND THE GLOVEBOX ARE (KINDLY REFER TO THE VIDEO IF ANY CONFUSION.



STEP 86 :- CONNECT ALL 4 CAMERA EXTENTION CABLES (PART 2,3,4,5)TO THE 32 PIN CONTROL CORD (PART 6) AS SHOWN.



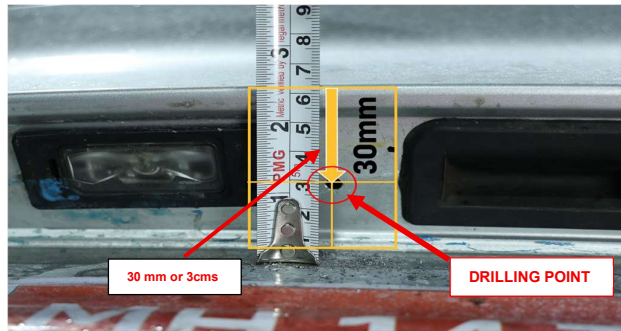
STEP 87 :- REINSTALL THE BUMPER INSERT COVER NEAR ENGINE BAY AS PER SERIES PROCESS.



STEP 88 :- CONNECT THE REMOTE SENSOR (PART 15) TO 32 PIN POWER CONTROL CORD (PART 6) AS SHOWN AFTER CONNECTING THE SENSOR CABLE, PASS THE CABLE




STEP 89 :- CLEAN THE AREA HIGHLIGHTED WITH THE ALCOHOL SWAB THAT IS PROVIDED AND WAIT FOR 1 MINUTE THEN, STICK THE REMOTE SENSOR, AS ABOVE LOCATION AS SHOWN.



STEP 90 :- MEASURE THE LENGTH OF 30 mm OR 3 cms FROM TOP AS SHOWN.

Distributed By :- **SKODA AUTO VOLKSWAGEN INDIA PVT LTD**

Printed in India

Version 01 



STEP 91 :- AFTER REMOVING 22.5 MM BIT (PART NO. 13), A SMALLER BIT 8 MM IS REVEALED. PLACE IT ON THE DRILL MACHINE



STEP 92 :- DRILL A HOLE AS PER MARKED LOCATION IN STEP 95. PAINT TOUCH UP TO AVOID RUSTING IF REQUIRED.



STEP 93 :- ROUTE REAR CAMERA CABLE (PART NO 7) THROUGH THE HOLE. PAINT TOUCH UP TO AVOID RUSTING IF REQUIRED



STEP 94 :- DRILL 2 SMALL HOLES WITH THE SMALLER HOLESAW(PART 17) 2MM TO FIX THE 2 SCREWS (PART NO 12) FOR REAR CAMERA.



STEP 95 :- SCREW (PART NO 12) AND FIX THE REAR CAMERA. (PART NO 7). COVER THE EXTRA SPACE IF ANY LEFT FROM THE REAR CAMERA HOLE WITH THE SILICONE SEALANT PROVIDED TO PREVENT WATER INGRESS.



STEP 96 :- CONNECT REAR CAMERA TO THE REAR EXTENTION CABLE.

Distributed By :- **SKODA AUTO VOLKSWAGEN INDIA PVT LTD**

Printed in India





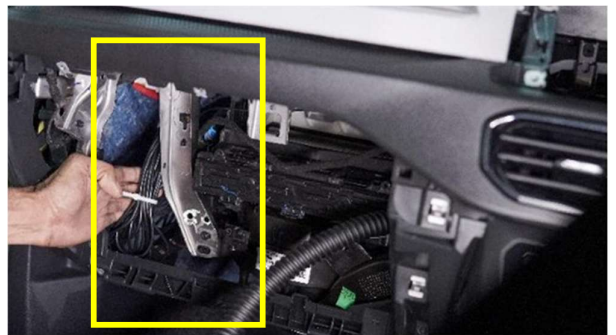
STEP 97 :- TIE ANY EXCESS CABLE WITH TIE CABLE (PART 6)



STEP 98 :- RE-ASSEMBLE TAILGATE TRIM AS PER SERIES PROCESS



STEP 99 :- TIE ANY EXCESS CABLES WITH TIE CABLE. (PART 6) NEAR THE GLOVE BOX



STEP 100 :- PLACE THE CABLES AS PER THE MARKED LOCATION.



STEP 101 :- STICK THE DSA TAPE (PART NUMBER 14) ON THE JUNCTION BOX AS SHOWN



STEP 102 :- STICK THE JUNCTION BOX (PART NO 1) ON THE TOP PART OF THE GLOVE BOX.

Distributed By :- **SKODA AUTO VOLKSWAGEN INDIA PVT LTD**

Printed in India





STEP 103 :- FITMENT OF MULTIMEDIA/INFOTAINMENT AS PER SERIES PROCESS



STEP 111 :- RE-CONNECT THE DASHBOARD PANEL BACK.



STEP 105 :- CHECK THE MULTIMEDIA/INFOTAINMENT IF THE DISPLAY IS CORRECTLY DISPLAYED.



STEP 106 :- MEASURE FROM THE TYRE 35 INCHES AND ALIGN THE MAT 35 INCHES FROM THE BOTH FRONT TYRES. MAT HAS TO BE PLACED. (PLEASE REFER TO THE VIDEO FOR REFERENCE).



STEP 107 :- PLACE THE MAT CAREFULLY IN ORDERLY WAY TO THE LEFT SIDE OF THE CAR, THE MAT SHOULD REMAIN STRAIGHT/PARALLEL TO THE CAR.



STEP 108 :- PLACE THE MAT CAREFULLY IN ORDERLY WAY TO THE RIGHT SIDE OF THE CAR, THE MAT SHOULD REMAIN STRAIGHT/PARALLEL TO THE CAR.

Distributed By :- **SKODA AUTO VOLKSWAGEN INDIA PVT LTD**

Printed in India

Version 01





STEP 109 :- OFFSET WILL BE WRITTEN ON THE MAT, PLACE REAR MAT EXACTLY ON 1.0 ON BOTH SIDES, THE REAR MAT SHOULD BE PLACED PARALLELLY TO THE CAR.



STEP 110 :- AS SHOWN THE REAR MAT IS PLACE EXACTLY ON 1.0 (KINDLY REFER TO THE VIDEO FOR BETTER UNDERSTANDING)



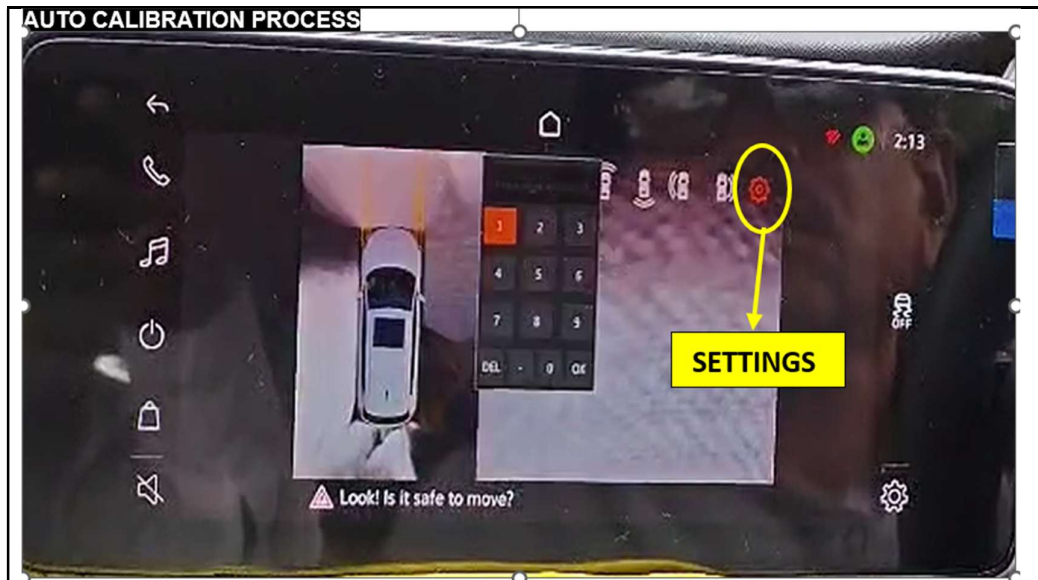
STEP 111 :- MAKE SURE THE MAT IS STRAIGHT/FLAT FROM ALL SIDES AND NOT FOLDED



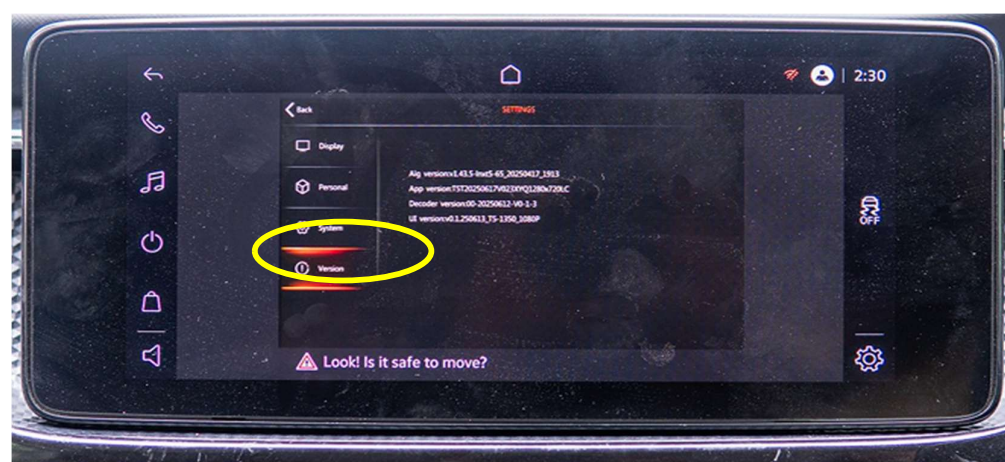
STEP 112 :- OVERVIEW OF THE MAT SETUP – EQUALLY ALIGNED ON ALL 4 SIDES (PUT SMALL WEIGHTED OBJECT ON THE MAT IN ORDER TO RESTRICT MOVEMENT OF THE MAT)

Distributed By :- **SKODA AUTO VOLKSWAGEN INDIA PVT LTD**

Printed in India




STEP 113 :- GO OT THE SETTINGS AFTER PUTTING THE PASSWORD WHICH IS ONLY AVAILABLE AT THE DEALERSHIP.



STEP 114 :-SCROLL DOWN TO "VERSION" TAB AND CLICK ON IT 5 TIMES CONTINUOUSLY

Distributed By :- **SKODAAUTO VOLKSWAGEN INDIA PVT LTD**

Printed in India

Version 01 



STEP 115 :- CLICK ON CALIBRATION



STEP 116 :- CLICK ON THE SECOND OPTION IN AUTOMATIC SECTION AS MARKED.

Distributed By :- **SKODA AUTO VOLKSWAGEN INDIA PVT LTD**

Printed in India




STEP 117 :- CHOOSE OFFSET AS MARKED ON STEP --,ITS 1.0 FOR SLAVIA, THEN CLICK ON "OK" AS SHOWN

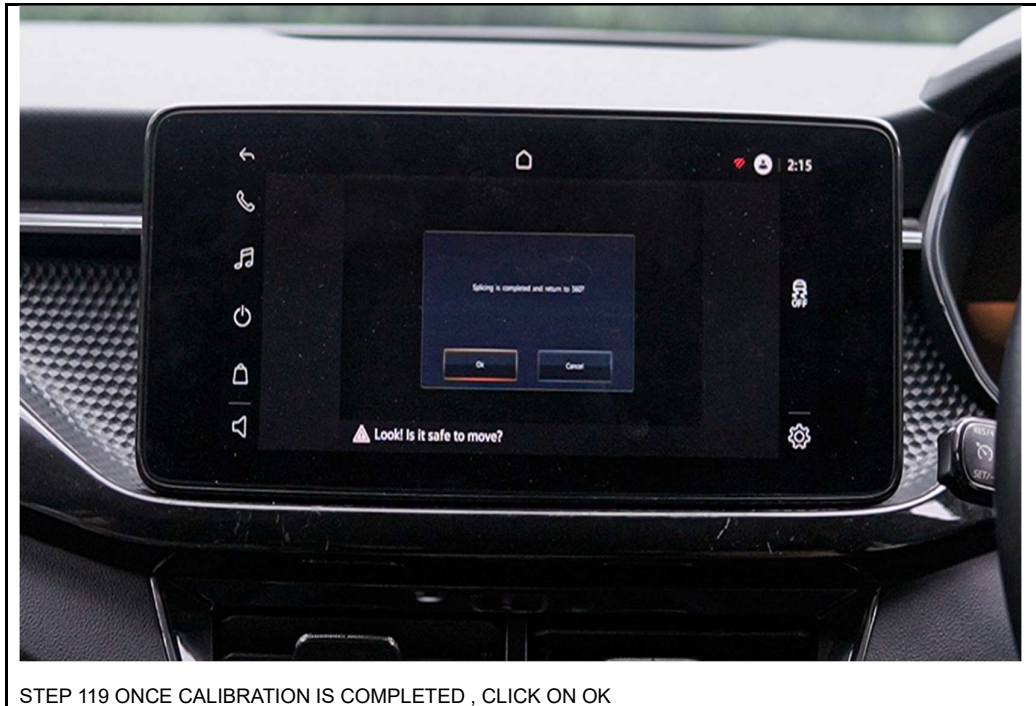


STEP 118 :- AUTO CALIBRATION WILL START, WILL TAKE AROUND 20 SECONDS.

Distributed By :- **SKODA AUTO VOLKSWAGEN INDIA PVT LTD**

Printed in India

Version 01 




STEP 119 ONCE CALIBRATION IS COMPLETED , CLICK ON OK

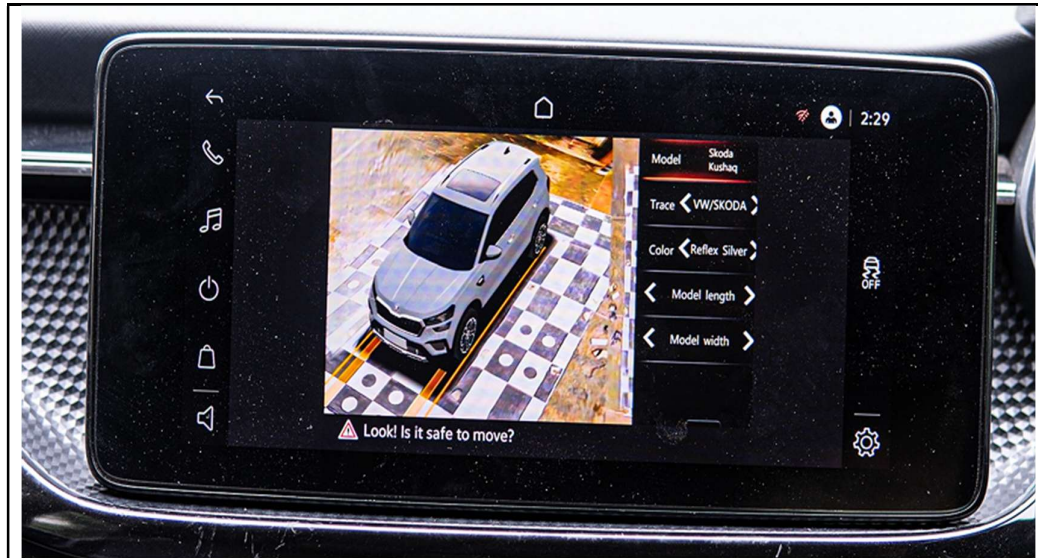


STEP 120 : CLICK ON DISPLAY > CAR MODEL.

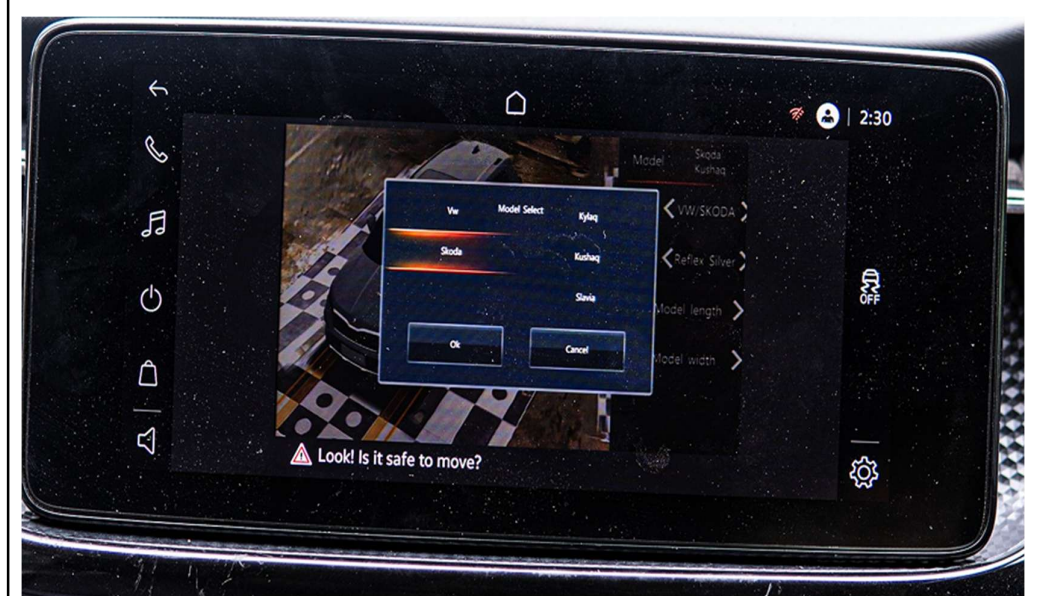
Distributed By :- **SKODAAUTO VOLKSWAGEN INDIA PVT LTD**

Printed in India

Version 01 



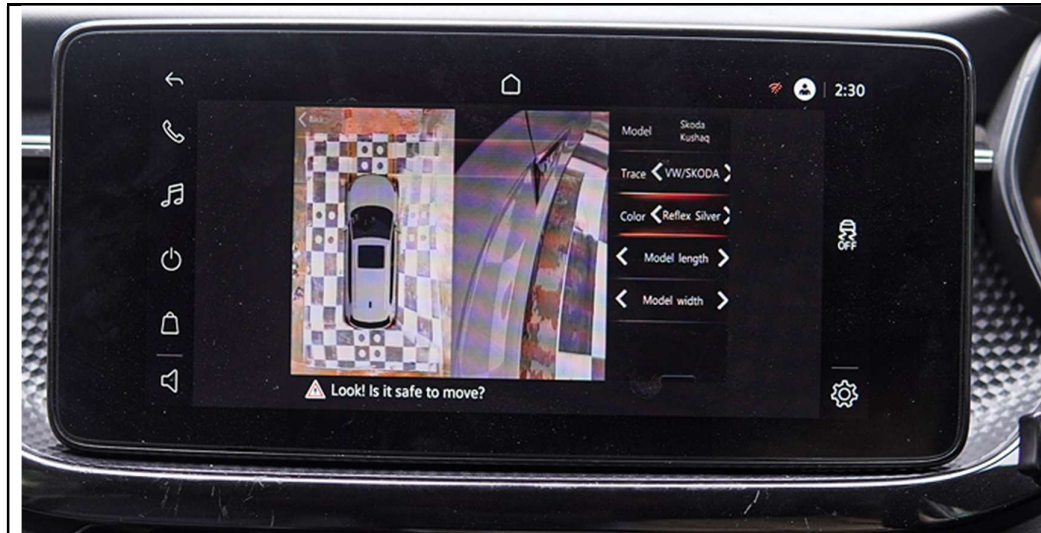
STEP 121 :- SELECT "BRAND" AND "CAR TYPE" AND "COLOUR"



STEP 122 :- SLECT "MODEL" AS PER THE CUSTOMERS VEHICLE MODEL

Distributed By :- **SKODA AUTO VOLKSWAGEN INDIA PVT LTD**

Printed in India



STEP 123 :- SELECT "BRAND" AND "CAR TYPE" & "COLOR"



STEP 124 :- INSTALLATION IS COMPLETED, TAKE A TEST DRIVE TO TEST THE DYNAMIC GUIDELINES AND CALIBRATION.

Distributed By :- **SKODAAUTO VOLKSWAGEN INDIA PVT LTD**

Printed in India



STEP 125 :- AFTER INSTALLATION OF THE 360 DEGREE CAMERA UNIT CARRY OUT THE ADAPTATION OF THE 360 DEGREE UNIT (IF AVAILABLE IN ODIS) → VEHICLE DIAGNOSTIC TESTER .

Distributed By :- **SKODAAUTO VOLKSWAGEN INDIA PVT LTD**

Printed in India

IMPORTANT STEPS FOR CALIBRATION

1. THE CALIBRATION MAT SHOULD NOT BE TORNED OR VERY DIRTY WHEN CALIBRATING, IT IS ADVISED TO PARTIALLY CLEAN THE DUST ON THE MAT BEFORE CALIBRATION
2. THE CALIBRATION MAT SHOULD NOT BE FOLDED EVEN SLIGHTEST, AS THIS WILL FAIL THE CALIBRATION PROCESS
3. THE LENGTH BETWEEN THE CAR AND MAT SHOULD BE EQUAL WHEN CHECKING IN STEP 112
4. THE MAT SHOULD NOT BE CRUMPLED OR FOLDED, SHOULD BE FLAT ALWAYS
5. YOU CAN USE SMALL STONES IN ORDER TO PREVENT THE MAT FROM FLYING ON WINDY DAYS
6. IT IS ADVISED TO CALIBRATE INDOOR TO AVOID WIND AND EXTERNAL FACTORS
7. IT IS ADVISED TO CALIBRATE IN DAYLIGHT OR BRIGHT INDOOR CONDITIONS, CALIBRATING IN DARK OR NIGHT MAY CAUSE FAILURE
8. ALL PARTS WHICH OPEN / DISMATE FOR FITMENT NEED TO BE REFITTED PROPERLY AS PER SERIES PROCEDURE
9. EXCESS WIRING HARNESS/CABLES NOT TO BE KEPT LOOSE OR OPEN ENSURE TIGHT FITMENT DONE WITH TIE CABLE TO AVOID FOULING OR RATTLING NOISE.
10. ALL CONNECTION TO BE CHECKED PROPERLY TO AVOID LOOSE CONNECTIONS (CONNECTOR TO CONNECTOR)

Distributed By :- **SKODAAUTO VOLKSWAGEN INDIA PVT LTD**

Printed in India

Version 01

